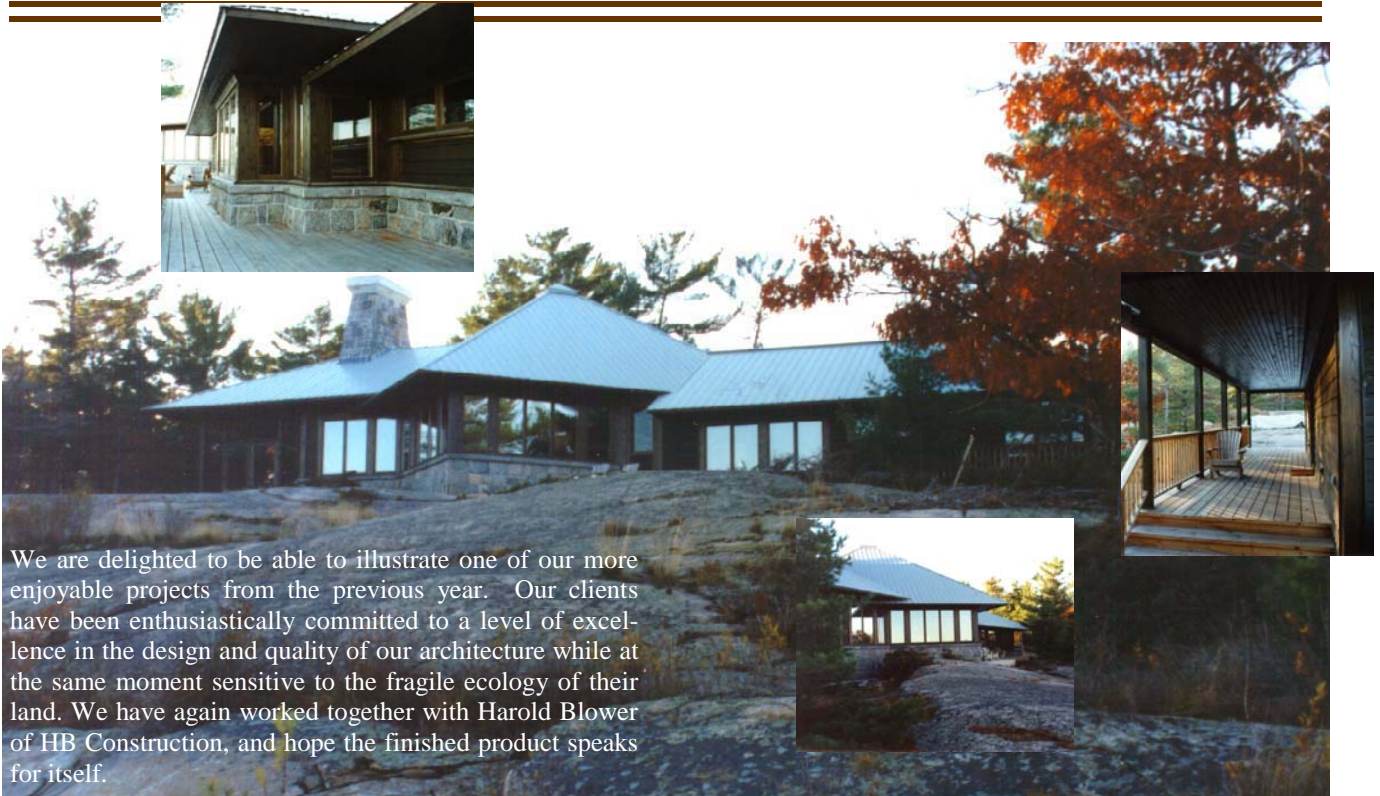


# Starland

March 1, 2000



We are delighted to be able to illustrate one of our more enjoyable projects from the previous year. Our clients have been enthusiastically committed to a level of excellence in the design and quality of our architecture while at the same moment sensitive to the fragile ecology of their land. We have again worked together with Harold Blower of HB Construction, and hope the finished product speaks for itself.

## *“...sensitivity to the fragile ecology”*

On the shores of Georgian Bay, this new country residence is designed to capture the unique and very beautiful features of its site, and become part of them. From the very first informal meeting on the property, our clients knew that they would create a building which sits down

## *“building....sits down into the landscape”*

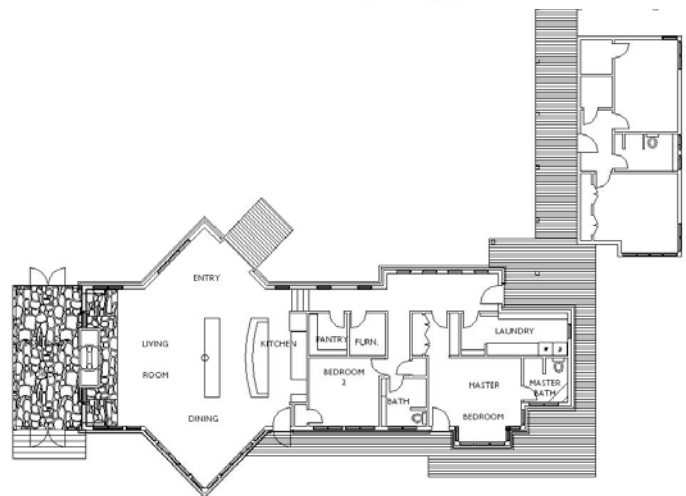
into the landscape, with views and outlooks no different from when walking on the land.

The building plan and floor levels were configured entirely in response to the specifics of this site. Use of low roof eaves, metal roofing the colour of the sky, and cedar

## *“minimizing intrusion on the shoreline”*

siding relating to the trunks of the adjacent pines, has assisted in achieving these goals, and in minimizing the intrusion on the shoreline. Windows are positioned to best

view important features and vistas, while being tucked under the low roof eaves for protection from the sun and to achieve enclosure. Stone foundation walls connect the structure visually to the rocky shoreline.



STARK IRELAND ARCHITECTS INC.

905 629 2500

starland@starland.on.ca